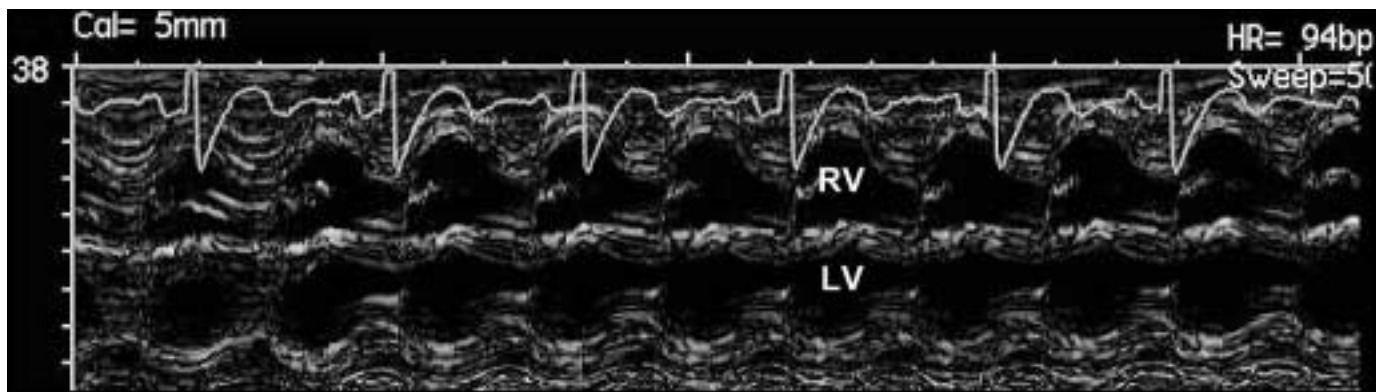


Christian Seiler

Department of Cardiology,  
University Hospital,  
Bern, Switzerland

## Image quiz: "strange" rhythm, (physiologic) right ventricular hypertrophy

### Image quiz



**Figure 1**  
"Strange" rhythm, (physiologic) right ventricular hypertrophy.

### Solution

One image, simultaneously obtained from two hearts. The ECG (94 beats per minute) belongs to the 17-year-old pregnant woman, the M-mode tracing of the right (RV) and left ventri-

cle (LV) to the much faster beating heart (150 beats per minute) of the 31-week-old fetus. Because of the high vascular resistance present in the not yet functional lung and the similar loading conditions of the ventricles during fetal life, there is a physiologic RV hypertrophy.

---

Correspondence:  
Christian Seiler, MD, FACC, FESC  
Professor and Co-Chairman of Cardiology  
University Hospital  
CH-3010 Bern  
Switzerland  
E-Mail: christian.seiler.cardio@insel.ch